

CLIENT

Serica

LOCATION

Bruce Platform,
UK North Sea

PROJECT OVERVIEW

BME recently provided a service to Serica on the Bruce Platform for carrying out the surface preparation of the walkways and modules

THE CHALLENGE AND SOLUTION

The Blastrac method of removing coating and bringing the raw deck into specification for recoating proved to be beneficial in a number of ways:

- 01.** Environmentally friendly
- 02.** Removed HAVS to the operator due to touch button controls
- 03.** Allowed SIMOPS due to no overspill of dust and debris
- 04.** No habitat for blasting operation
- 05.** Reduced POB on the installation due to smaller size of coating team
- 06.** Reduced consumable costs
- 07.** Reduced waste disposal cost
- 08.** Reduced noise
- 09.** Increased productivity
- 10.** Lower cost to client

Cost comparison of blast media per sq. meter.

MEDIA	COST PER KG £	30 SQM
Mild Steel Round Ball 460	£1.50	£22.50
GMA Extreme Blast	£0.50	£225.00

CLEAN UP AND DISPOSE 30SQM

OPERATION	CLEAN UP	WASTE CHARGE
Blastrac	½hr per shift	Base it on 15kg plus coating
Open blast	Difficult to measure possibly 6 hours	Base it on 450kg plus coating

Garnet production for heavy walkways as per below - a mean of 15kg per sq. meter

<p>GMA ExtremeBlast™* Our coarsest grade for the toughest jobs</p>	<p>PERFORMANCE Removal of exceptionally resistant specialist coatings, heavy liners and marine foulings.</p> <ul style="list-style-type: none">• High surface profile of 3.5-4.5 mil (90-115 µm) or greater with exceptionally clean surface, enabling remarkable bonding of specialist coatings.• Blasting rates: Up to 280 ft²/hr (26 m²/hr).• Consumption rate: 2.5 - 3.5 lb/ft² (12.20-17.09 kg/m²)
---	--



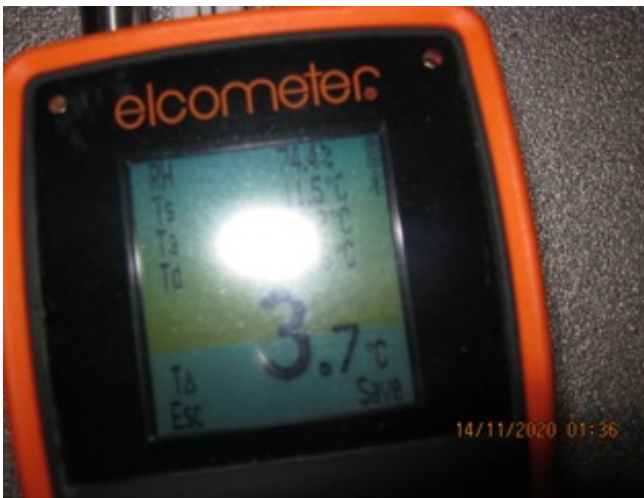
Cleaning and preparation resulting in a clean blasted deck with no dust or debris to clean up



Ease of working in a live module with no habitat - easy to prime and protect



Difficult area for machinery but coping well and allowing SIMOPS



RESULTS AND SUMMARY

This project demonstrated that Blastrac allows good production with minimum disruption to other activities.

It proved to be less noisy and produce little to no vibration.

The walkways work could comfortably be carried out by a two-man team of Blaster/Mechanic and Painter/Inspector and would have great results.